

The most advanced digital preservation software

One integrated solution to cover all of your appraisal, preservation and access needs.



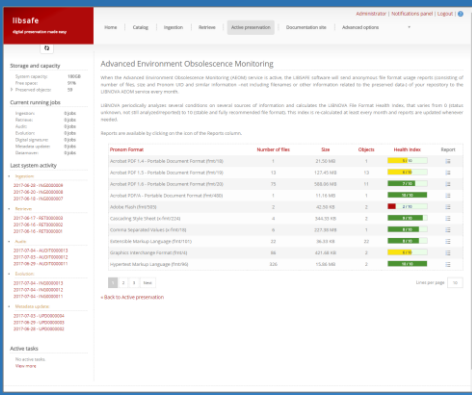
LIBSAFE **ADVANCED**

For advanced entities with complex needs.

Secure, scalable, proven and comprehensive.
On-premise or Cloud.

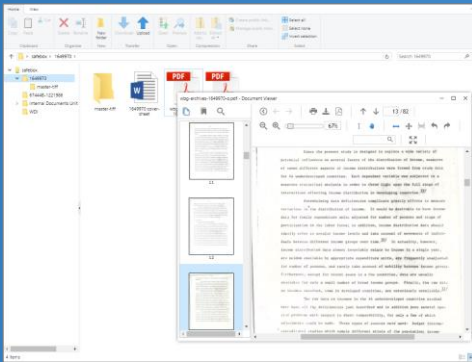


COMPREHENSIVE SOLUTION



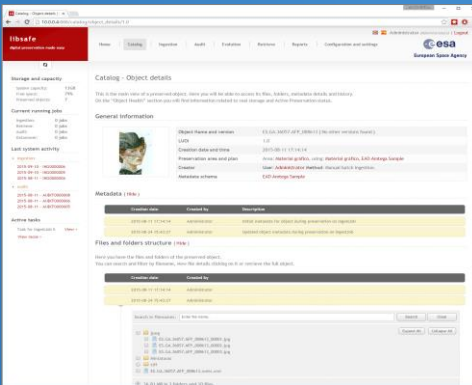
LIBSAFE is the perfect tool for designing, implementing and managing long term digital preservation archives. It is OAIS (ISO 14,721)-based and TDR (ISO 16,363)-aligned, and provides all the functionality needed most of the time. An easy to use interface, plus a powerful processing engine ensure an efficient digital preservation.

APPRAISAL + PRESERVATION + ACCESS



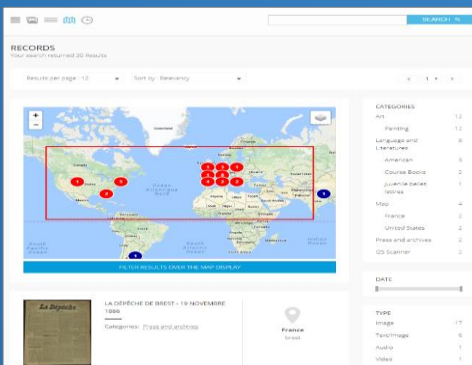
APPRAISAL

The new **deep learning (AI)**-assisted appraisal module allows you to transfer the content to a preservation system staging area, in a fast and effortless way, applying a basic level of preservation to it (virus check, fixity, file format detection and change tracking). From here, it is possible to enrich, structure, clean and discard objects to increase the preservation level. Artificial Intelligence-based processes are available to detect problematic files, automate document classification and for sensitive information detection.



PRESERVATION

Powerful, integrated digital preservation repository. Maximum security and protection for your digital assets. Every feature is present: from format characterization and evolution to obsolescence detection, including 3rd party systems integration (as the source or the destination of the information), full metadata management and stunning reporting.



ACCESS

Wonderful, captivating interface with blink-eye fast full-text search and highlighting. Faceted search, time line, geographical search.

Capable of displaying 3D objects, 360° photographs, GIS, HD images, video, audio, oral history-enriched objects, documents such as DOC, PDF and emails.

■ DETAILED FEATURES

General

- Modern and intuitive browser-based user interface.
 - Manages and integrates with open source-included tools, such as Jhove, Droid, Fits, Imagemagik, etc.
 - Defined exit path from day one, with full export capability, documented database and simple folder based AIPs.
-

Ingestion and data management

- Unlimited preservation areas and plans, that allow for the preservation of objects with different structures, metadata and needs.
 - Dynamic or user-defined generation of preservation formats from original object files (.doc to PDF/A, etc.).
 - Object characterization and validation with multiple engines and tools (Droid, Fits, Jhove, VeraPDF, etc.).
 - Object fixity policy enforcement, revealing objects with wrong structures, formats or metadata.
 - Descriptive metadata extraction from .xml (including METS), .txt, .csv and others. Easy to configure for other metadata formats.
 - Storage management, making unlimited copies of the objects into predefined storage devices that could be mixed (local + remote, local + cloud, etc.).
-

Data migration

- File format migration, supporting open source migration tools and user-defined ones. Output validation possible.
 - Re-characterization of previously ingested objects.
 - Metadata migration. Digital signature management and re-signing.
-

Metadata

- Unlimited metadata schemas. User customizable schemas. DC, MARC21 and plain EAD out of the box.
 - Metadata RIGHTS management, using extended metadata schemas.
 - Metadata versioning, showing not only the last metadata record for an object, but also previous ones.
 - Metadata transformation tools. Allows schema's content migration using an XSLT.
-

Reporting

- Comprehensive reports. Open database model for advanced reporting.
 - Collection status (including health), ingestion reports, job reporting, etc.
-

Access

- Internal object catalog allows for searching by any metadata field.
- Comprehensive object details overview, including metadata, files, file formats, object health, events, storage, etc.
- Retrieve any file, folder, object or multiple objects from the interface.
- Search and retrieve documented API for connecting with other systems.
- Search by URL: very easy integration with catalog and access tools.
- DIP object transformation at extraction, supporting various user communities (generate DIPs with a certain format or erasing certain information).
- Integration with access and discovery tools using the open AIP formats (just a filesystem folder) and open database model.

■ DETAILED FEATURES II

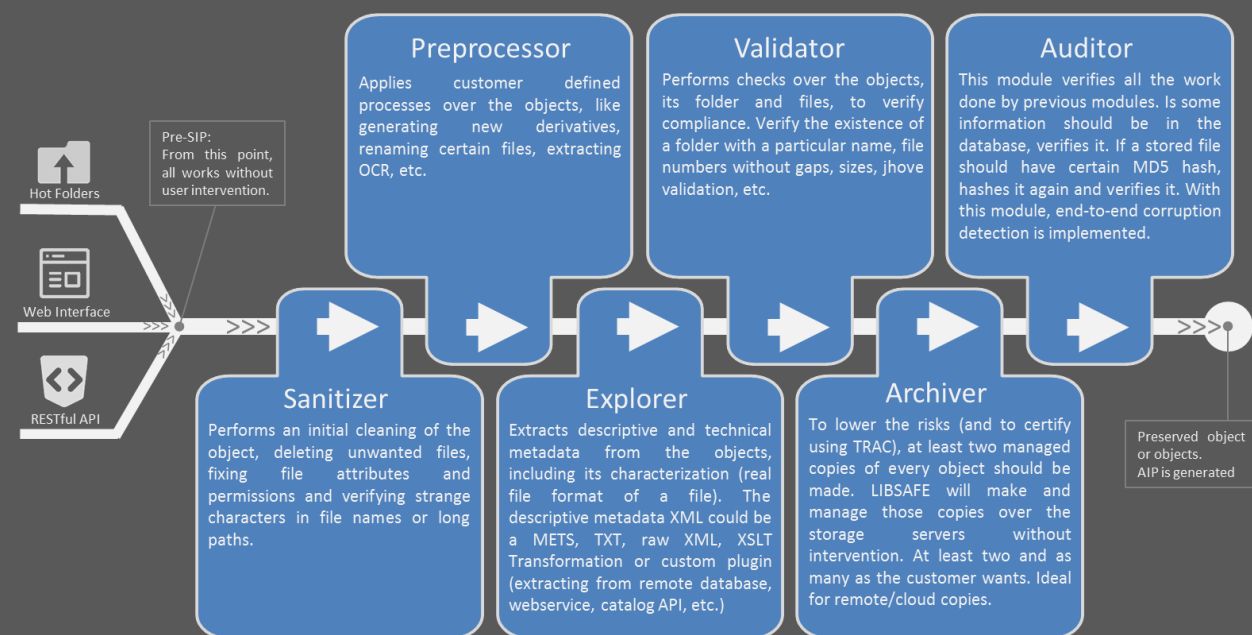
Security and administration

- HTTPS, SSL for secure access and information transfer.
- Multi-role user framework, allowing users to access only certain content areas or functions.
- Powerful email notification and alerting system (ingestion jobs with errors, infrastructure problems, user database changes, etc.).
- Complete system and object audit trail.
- Multiple internal information storage (internal database + XML files included in the AIP). Even if database and software are lost, the collection is safe.

Storage management

- Storage and infrastructure management, making multiple object copies based on the storage policy for the preservation plan.
- Storage auditing capability, running background scheduled checks to detect corruption or manipulation.

■ INGESTION PROCEDURE



■ EDITIONS

- **CLOUD/HOSTED:** LIBNOVA will provide all the needed infrastructure and storage. It is also possible to use the cloud storage you have or use now.
- **ON-PREMISE:** The software will use your own infrastructure.

LIBNOVA USA & CANADA
14 NE First Ave (2nd floor)
Miami, Florida 33132, USA
Tel: +1 844-894-6532
contact@libnova.com

LIBNOVA EUROPE & LATAM
Paseo de la Castellana 153
28046 Madrid, SPAIN
Tel: +34 91 449 08 94
contacto@libnova.com


libnova
the most advanced digital preservation platform
www.libnova.com